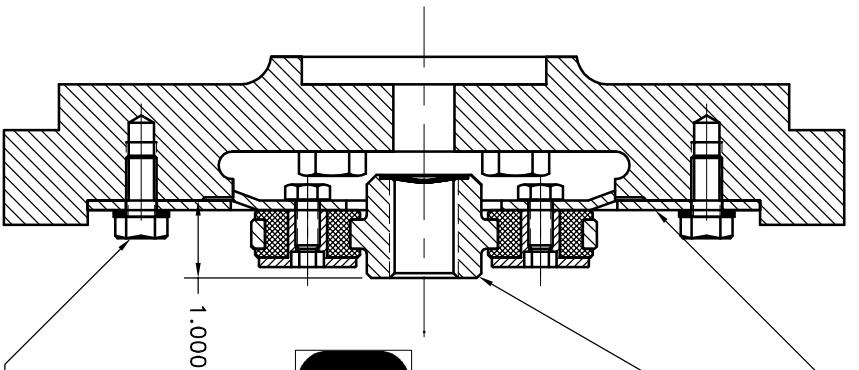


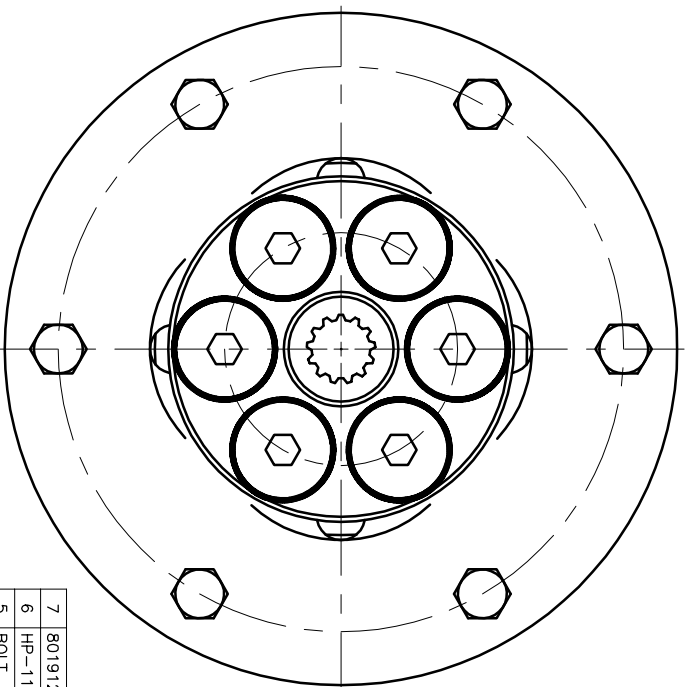
REV	DATE	CHANGE DESCRIPTION	MOD. BY	CK1	CK2
E	12/05/2006	CHANGED TO BOLTED INSERTS.	ZS	RJH	HM



P/N 124118-01
 8-1/2" O.D.
 (6) .406 HOLES EQ.
 SPACED ON 7.283 B.C.
 P/N 123207-02
 SPLINE DATA
 13 TOOTH
 16/32 D.P., 30° P.A.
 .875 MAJOR DIA.

STOP AND LOOK
 ASSEMBLED CORRECTLY:

M10 BOLTS TORQUE 29-33 FT.LBS.



ASS'Y WORKS WITH
 FLYWHEELS: C-1(16414-25111) &
 C-4(19629-25113)
 HOUSINGS: D-9(19004-04611) &
 D-8(19077-04611)

KUBOTA -03

100% Aligned by:

QTY	DESCRIPTION	PART NUMBER	DET.
1	GREASE	7 801912	
1	HUBBARD PLUG	6 HP-1125-S-32	
6	5/16-24x5/8 HHB Y D BOLT	5 123729-01	
6	THREADED BUSHING	4 123729-01	
6	NEOPRENE INSERT	3 H52500	
1	COUPLING HUB	2 123207-02	
1	FLYWHEEL PLATE	1 124118-01	

SYMBOLS	DESCRIPTION
	STAINLESS
	ANGULARITY
	PERPENDICULARITY
	PARALLELISM
	SURFACE FINISH
	TOLERANCES UNLESS OTHERWISE SPECIFIED
	MAXIMUM
	ANGLE 1/2
	ROUNDNESS
	TOTAL RUN OUT
	CIRCULAR RUN OUT
	CYLINDRICITY
	FINISH

CLASS	MAKE	BUR:	DATE	DRAWING NO.
			1-16-93	124099
DESCRIPTION	CHECKED BY	SCALE	SHEET	OF
	RJH		124099	12



FLYWHEEL COUPLING ASSY

THIS DRAWING IS THE PROPERTY OF HAYES MFG. INC. AND IS LOANED TO YOU FOR THE CONSTRUCTION OF THE EQUIPMENT SPECIFIED HEREON. IT SHALL BE USED AS A MEANS OF REFERENCE TO WORK FURNISHED BY THIS COMPANY ONLY, AND IS NOT TO BE SUBMITTED TO OUTSIDE PARTIES FOR EXAMINATION WITHOUT OUR CONSENT.